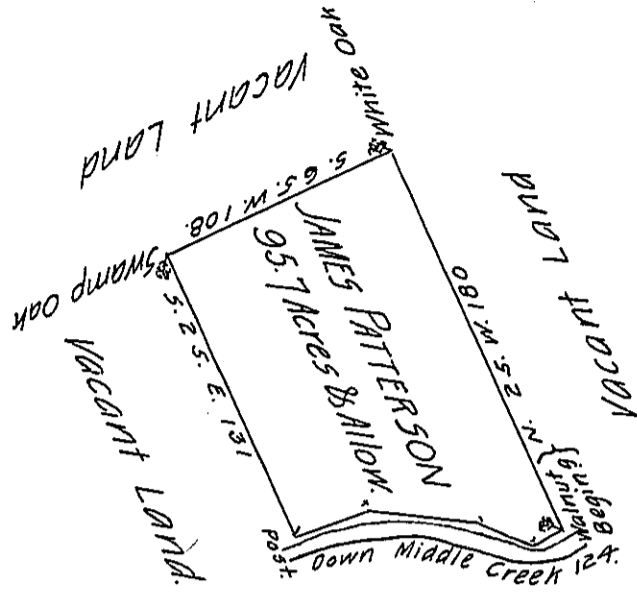


Courses and Distances }
Down the Creek

N. 73. E. 34.
587. E. 50.
5.66 E. 28.
N. 61 E. 12
124.



The Draught of a Tract of Land called Lowland, situate on Middle Creek in the County of Cumberland, containing Ninety five Acres, One Hundred thirty four Perches with an Allowance proportionate to Six Acres $\frac{7}{100}$ Cent. for Roads. Survey'd the 18th day of October Anno Dom. 1766. In Pursuance of an Order of Survey N^o 240 to James Patterson Bearing Date at Philad^a the first Day of August A.D. 1766.

$\frac{7}{100}$ W^m Maclay, Dept^y Surv^r.

To John Lukens, Esq^r, S. G. }
of the Province of Pennsylv^a }

IN TESTIMONY that the above is a copy of the original remaining on file in the Department of Internal Affairs of Pennsylvania, made conformably to an Act of Assembly approved the 16th day of February, 1833, I have hereunto set my Hand and caused the Seal of said Department to be affixed at Harrisburg, this thirtieth day of March 1906.

Isaac D. Brown
Secretary of Internal Affairs.